

# Houston SPI Local Technical User Forum Change Request Ranking

SmartPlant ©

Implementation Team



**FLUOR**®

**INTERGRAPH**

# Admin Module CR Ranking



- ◆ CR #69073                      Admin                      Item 1    LTUF Rank 6
  - Provide naming convention for ESL and CAD Loop Diagram drawings for the automatically generated physical files to avoid manual renaming
  
- ◆ CR #68175                      Admin                      Item 2    LTUF Rank 8
  - Provide command for disabling and enabling user login for domains to prevent users from connecting while performing maintenance work operations that require restricted access
  
- ◆ CR #72770                      Admin                      Item 3    LTUF Rank 8
  - Provide more detailed access rights to improve the granularly of the access rights management for the end users, allowing better workflow management, IP protection and work-sharing
  
- ◆ CR #71651                      Admin                      Item 4    LTUF Rank 7
  - Define default paper sizes for reports in the Admin Module Document Manager to eliminating the need for each end user to manually control the default paper size

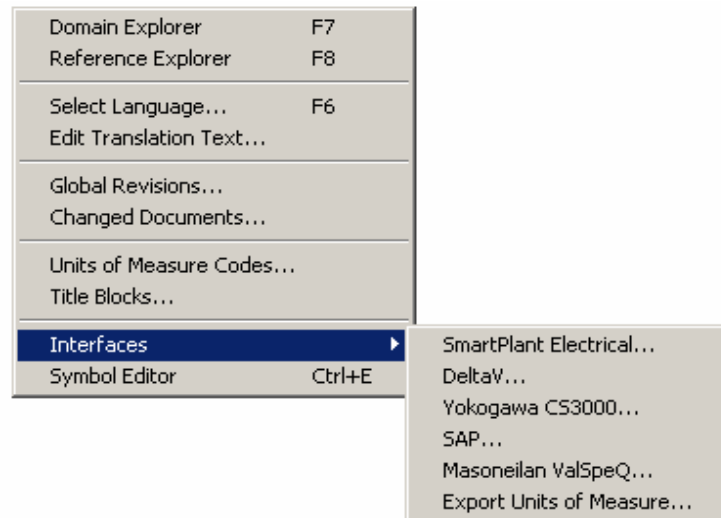
# Application Programming Interface CRs



- ◆ CR #72664                      API                      Item 5    LTUF Rank 5
  - Need to be able to view .psr (Power Soft Reports) files generated in SPI in SP Explorer. Ability to retrieve, view and print custom reports built within SPI to provide customer specific reporting data and formats
  
- ◆ CR #79869                      API                      Item 6    LTUF Rank 4
  - Make ESL generated hook-up drawing available via API for SP Explorer, for TEF as a drawing and via API itself
  
- ◆ CR #73913                      API                      Item 7    LTUF Rank 6
  - Develop API similar to other tools allowing retrieve and update of data in SPI by external applications and not only retrieval of the documents

# As Built CR Ranking

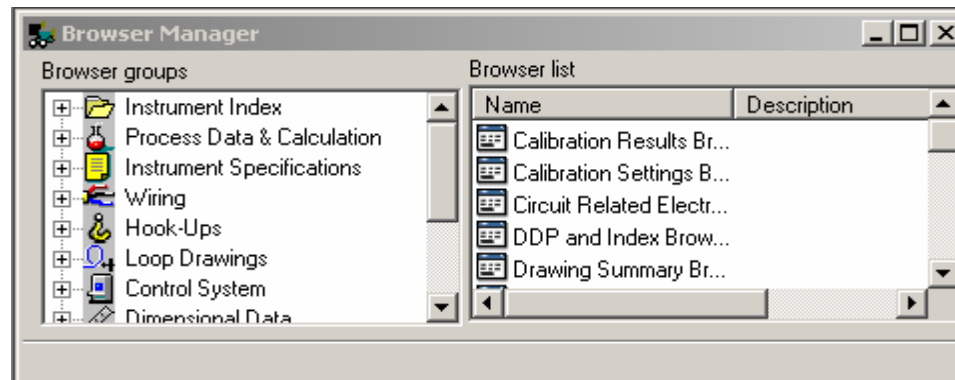
- ◆ CR #73945                      As Build Item 8   LTUF Rank 7
  - Improve off-line Project - As Built execution functionality for external interfaces and work-sharing





# Browser CR Ranking

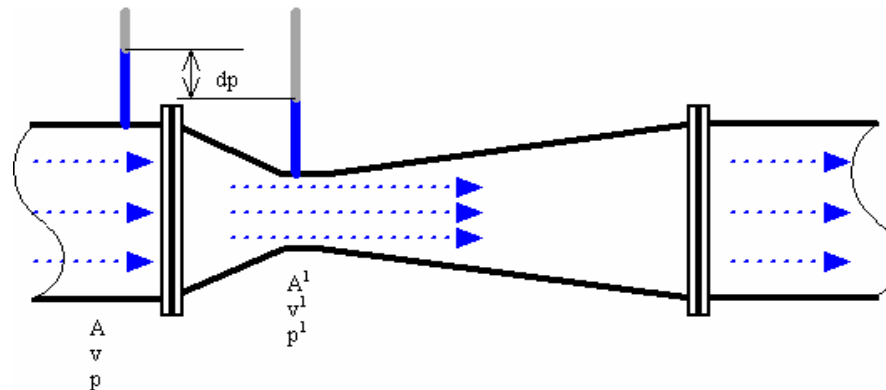
- ◆ CR #75076 Browser Item 9 LTUF Rank 6
  - Ability to show the associated Inline Tag in a Browser View with the primary instrument that it is associated to
- ◆ CR #78416 Browser Item 10 LTUF Rank 10
  - **Develop Custom Browser wizard to be able to combine various tables and pieces of data where possible**



# Calculations CR Ranking



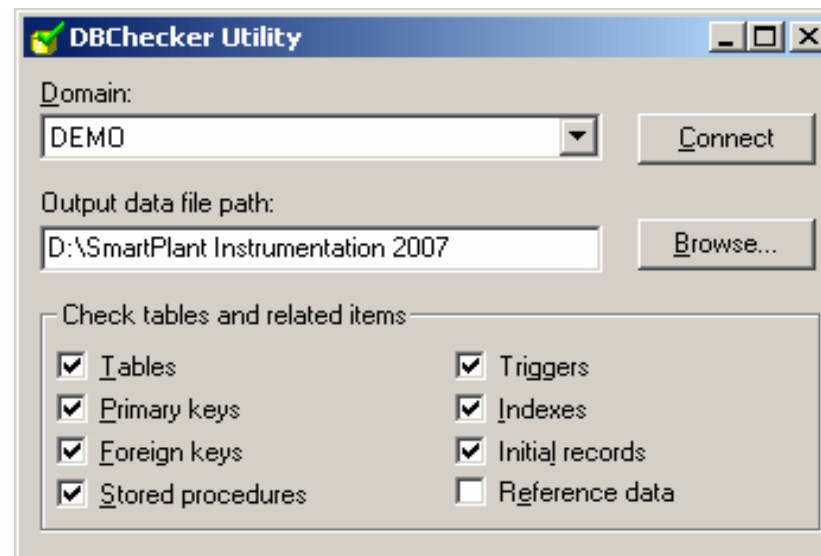
- ◆ CR #69094                      Calculations                      Item 11 LTUF Rank 6
  - Update basis of calculations to handle new International Organization of Standards - ISO 5167-2003 Measurement of fluid flow by means of pressure differential devices





# DBChecker Utility CR Ranking

- ◆ **CR #84114**    **CheckDb**                      **Item 12**                      **LTUF Rank 8**
  - **Improve problem resolution capabilities through enhancing DBChecker utility**







# Enhanced SmartLoop CR Ranking

- ◆ CR #41406                      ESL                      Item 13    LTUF Rank 6
  - Allow the use of User defined text manipulation with string functions in Enhanced SmartLoop (Substring, Trip, Upper, Lower, etc)
  
- ◆ CR #52407                      ESL                      Item 14    LTUF Rank 7
  - Permit Scaling of the ESL generated drawing to fit on the report printout (8.5"x11" to 11"x17", A4 to A3, etc)
  
- ◆ CR #66280                      ESL                      Item 15    LTUF Rank 7
  - Regenerating custom mode Enhanced SmartLoop drawings should automatically use new symbols if they were modified
  
- ◆ CR #83131                      ESL                      Item 16    LTUF Rank 6
  - Make wiring entity (strip, cable) SPI-defined drawing name available as macro in Enhanced SmartLoop, (e.g. show JB panel-strip-terminal report drawing name/number on the Loop drawing)
  
- ◆ CR #81140                      ESL                      Item 17    LTUF Rank 5
  - Combine the two Enhanced SmartLoop generation methods (automatic and custom) into one function





# General Change Requests Ranking



- ◆ **CR #73912**                      **General**                      **Item 20 LTUF Rank 8**
  - **Develop an easy to use engineering data reuse mechanism, e.g. be able to extract and bring into a totally different domain a "package" of various SPI reference data**
  
- ◆ **CR #76116**                      **General**                      **Item 21 LTUF Rank 7**
  - **Support storing Safety Instrumented Systems (SIL Rating, Interlock Numbers, Etc...) information in SPI**
  
- ◆ **CR #73914**                      **General**                      **Item 22 LTUF Rank 5**
  - **Develop Logic diagramming capability in SPI for PLC and Logic Solver System documentation**
  
- ◆ **CR #73910**                      **General**                      **Item 23 LTUF Rank 6**
  - **Develop cause and effect diagramming capability for Safety Instrumented Systems and PLC system documentation**

# Index Change Requests Ranking



- ◆ CR #70781                      Index                      Item 24 LTUF Rank 7
  - Add the Loop Suffix column in the batch loop (typical loop) creation
- ◆ CR #82939                      Index                      Item 25 LTUF Rank 6
  - Enhance available numeric segment report in the As Build domain to cover complete plant – As-Built and all projects
- ◆ CR #87353                      Index                      Item 26 LTUF Rank 7
  - Make "Apply All profile options" sensitive only to the options defined in preferences and not all options defined in the Instrument type profile
- ◆ **CR #71051                      Index                      Item 27 LTUF Rank 9**
  - **Be able to change from any tag class to any other tag class retaining some information if common between classes**



# Integration CR Ranking



- ◆ CR #86774                      Integration                      Item 30 LTUF Rank 6
  - Create a utility to "enable" existing SPI domains to be TEF compatible
  
- ◆ CR #82169                      Integration                      Item 31 LTUF Rank 5
  - Allow different views of the same browser to be published as different documents to SPF
  
- ◆ CR #80542                      Integration                      Item 32 LTUF Rank 6
  - Need to support macro (material) expansion between SPPID and SPI within TEF



# Integration CR Ranking

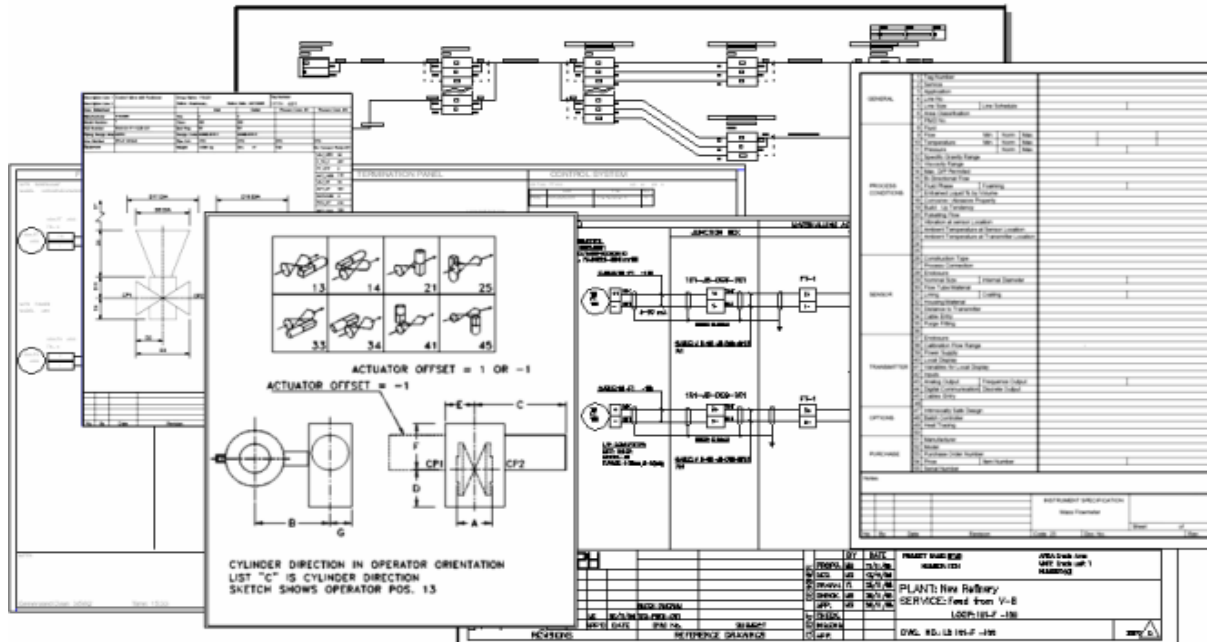


- ◆ CR #73911                      Integration                      Item 33 LTUF Rank 6
  - Develop interfaces with the wiring equipment (barriers, JB's, etc) vendors similar to DCS reference catalogs
  
- ◆ CR #72924                      Integration                      Item 34 LTUF Rank 6
  - Integrate cable management between SPI and SPEL with interface to SP3D routing
  
- ◆ CR #73753                      Integration                      Item 35 LTUF Rank 6
  - Replace old SPPID-SPI interface that uses direct access from SPI Import module into the SPPID database with a new interface that uses the SP Schema based file transfer similar to SPI-SPEL interface where P&ID will be published to file and retrieved in SPI



# Reports Change Requests Ranking

- ◆ CR #74564 Reports Item 36 LTUF Rank 7
  - Develop a way to remove a document created in SPI

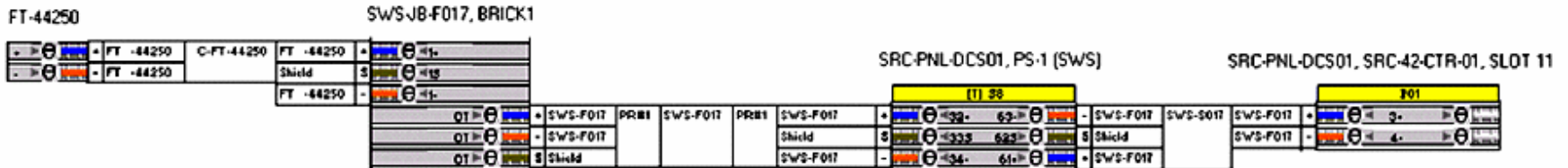






# Wiring CR Ranking

- ◆ CR #73725                      Wiring                      Item 37 LTUF Rank 6
  - Add 2 more Alarm and Trip points to the 4 already existing in the CS Tag
- ◆ CR #73515                      Wiring                      Item 38 LTUF Rank 7
  - Add Reference Drawings capability to Fieldbus segment Diagram report



# SPI Change Requests Ranking

- ◆ Review, Summations and Questions

**SmartPlant**<sup>®</sup>  
*Instrumentation*

**FLUOR**<sup>®</sup>