



Creating and Utilizing User-Defined Views for SmartPlant Instrumentation Specification Forms





Creating and Utilizing User-Defined Views for SmartPlant Instrumentation Specification Forms

Why would you need a User-Defined View in a SPI Specification Form?

Don't the Intergraph Specification Forms already have all of the possible needs covered?





Creating and Utilizing User-Defined Views for SmartPlant Instrumentation Specification Forms

User-Defined Views can be created for the following database entities:

- Instruments
- Cables
- Panels
- Loops
- Wiring Equipment
- Hook-Up Items





Requirements for Creating User-Defined Views

- The respective ID column must be included in the view.

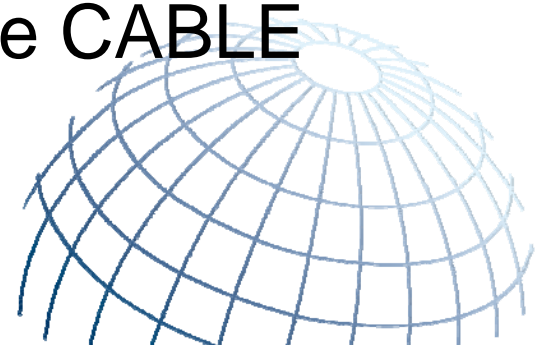
Examples: (1) If a view is to be used for instrument specifications it must contain the CMPNT_ID column. (2) For a view to be used in a cable specification, CABLE_ID must be included.





Requirements for Creating User-Defined Views

- The view must include matching rows of the table in which the ID is the primary key.
Examples: (1) If a view is to be used for instrument specifications it must contain matching rows of the COMPONENT table.
(2) For a view to be used in a cable specification, matching rows for the CABLE table must be included.





How to Create a User-Defined View

- The view must be created external to SPI. (Infomaker, Internal Setup, SQL Plus, SQL Worksheet, etc.)
- Grants should be given to the admin schema and the domain schema view users.





Sample SQL Script to Create User-Defined View

```
DROP VIEW test.view_pid_number;

CREATE VIEW test.view_pid_number
AS SELECT
    a.cmpnt_id,
    b.dwg_name "PID_DWG_NUMBER"
FROM
    test.component a,
    test.drawing b
WHERE
    a.dwg_id = b.dwg_id
;
GRANT SELECT on test.view_pid_number to test_view;
GRANT SELECT on test.view_pid_number to in_dbamn;
```





Executing the Script Using Internal Setup Utility

1. Log in as the domain schema user.
2. Run the script.
3. Test the view. Execute a SQL select “count (*)” to confirm that the view is working properly. Make sure that the number of rows in the view equal the number of rows in the respective ID table.





Creating and Utilizing User-Defined Views for SmartPlant Instrumentation Specification Forms

Internal Setup

File Action Settings Window Help

Database Type Test and Query

Database type

- Sybase Adaptive Server Anywhere
- Oracle
- SQL Server

ODBC driver:

Connection settings

Schema logon name: Server name:

Schema logon password: Database name:

DBParm:

Auto commit

Query

I





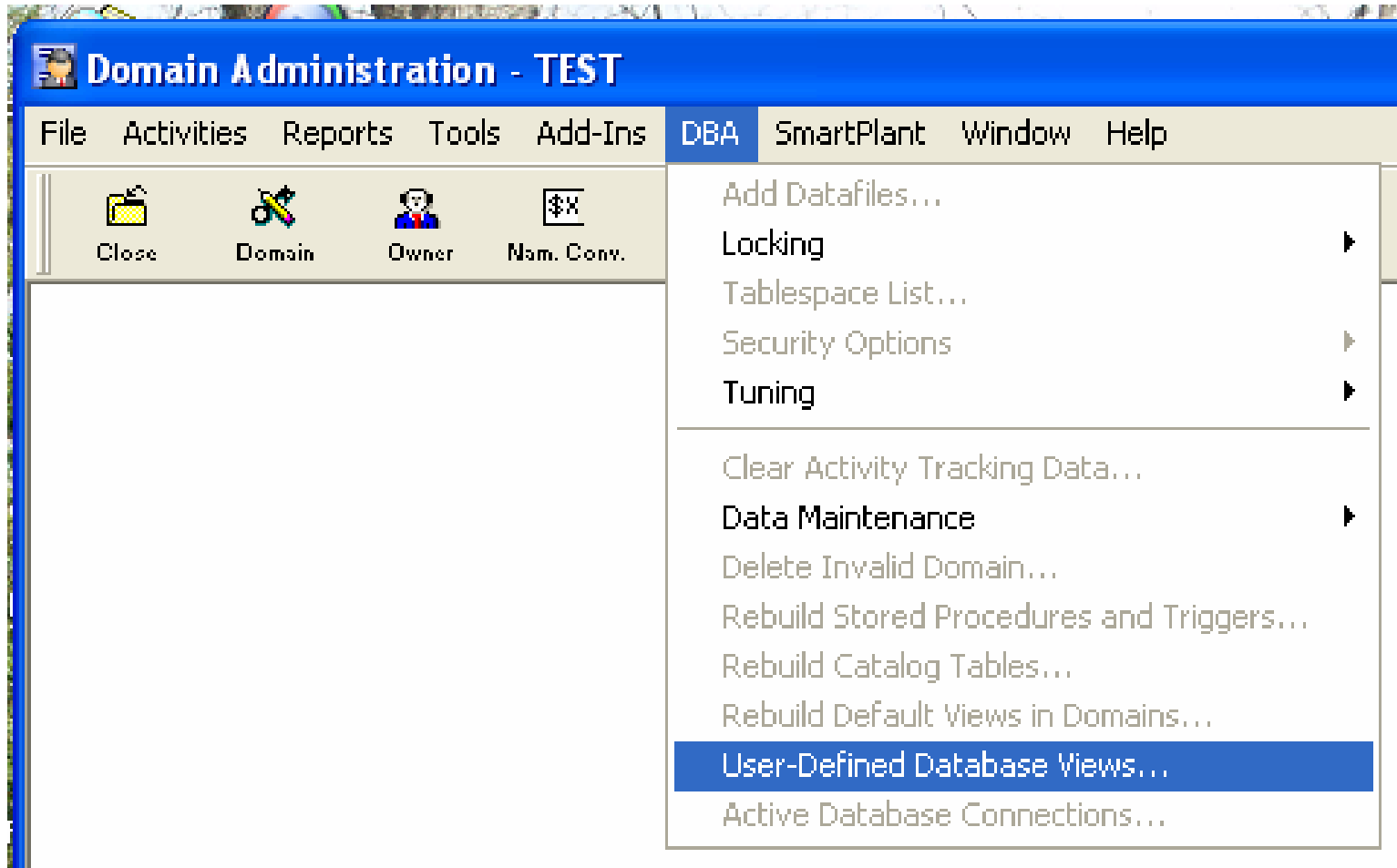
Adding the User-Defined View to the SPI Domain

1. Log in as Domain Administrator.
2. Select the “DBA” drop-down menu.
3. Chose the “User-Defined Database Views” option.



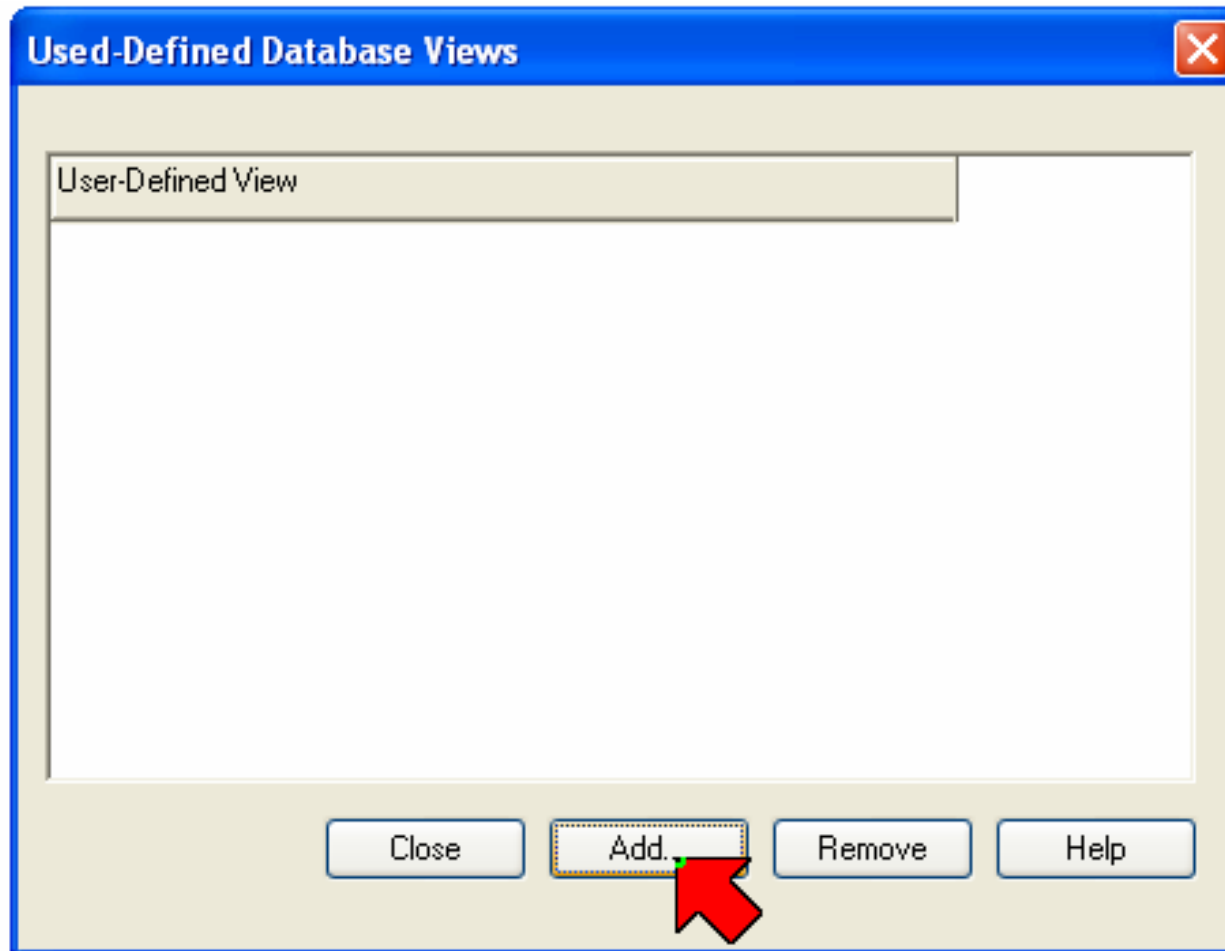


Creating and Utilizing User-Defined Views for SmartPlant Instrumentation Specification Forms





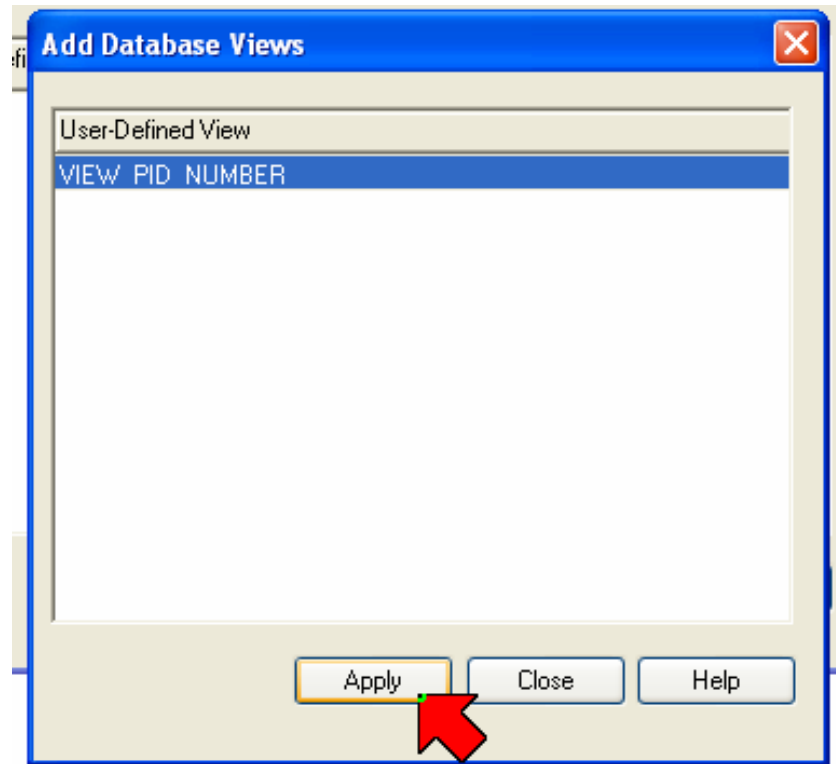
Creating and Utilizing User-Defined Views for SmartPlant Instrumentation Specification Forms





Creating and Utilizing User-Defined Views for SmartPlant Instrumentation Specification Forms

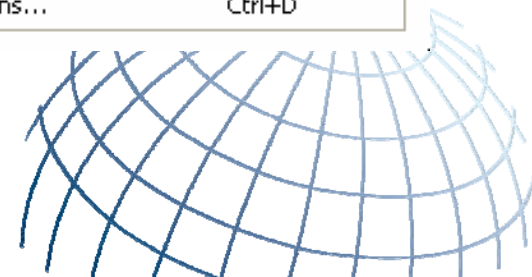
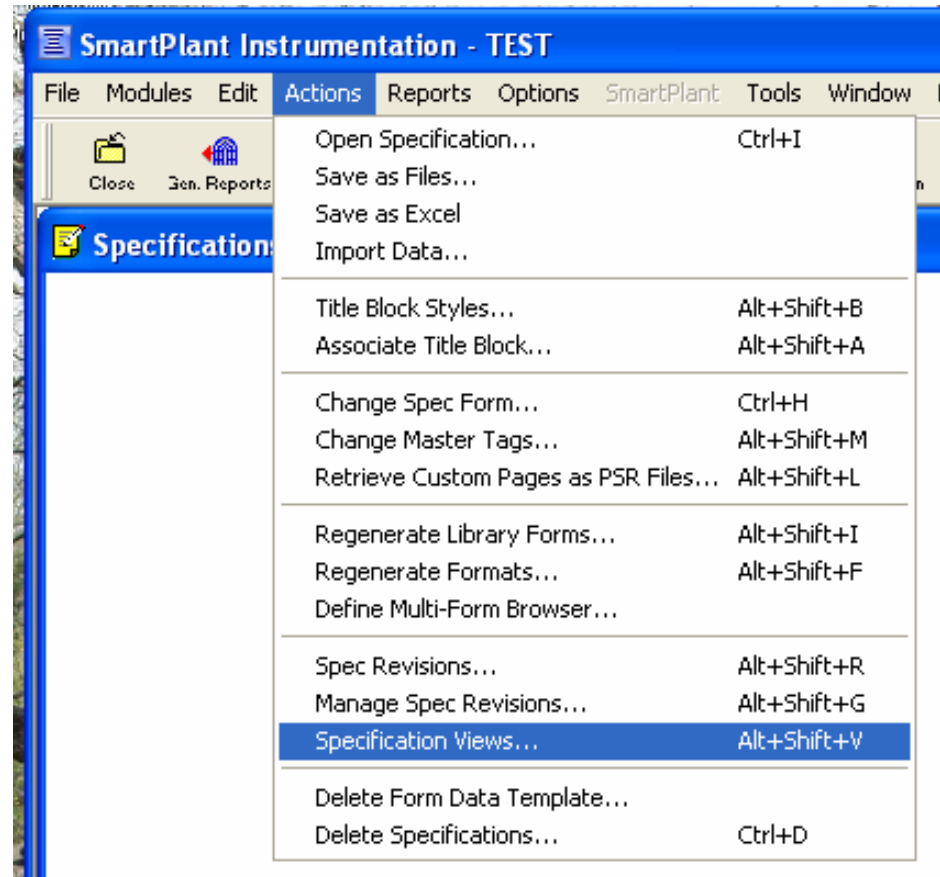
4. The “Add Database View” window opens, listing all qualified views that have been added to the database.
5. Select the View and press “Apply”.





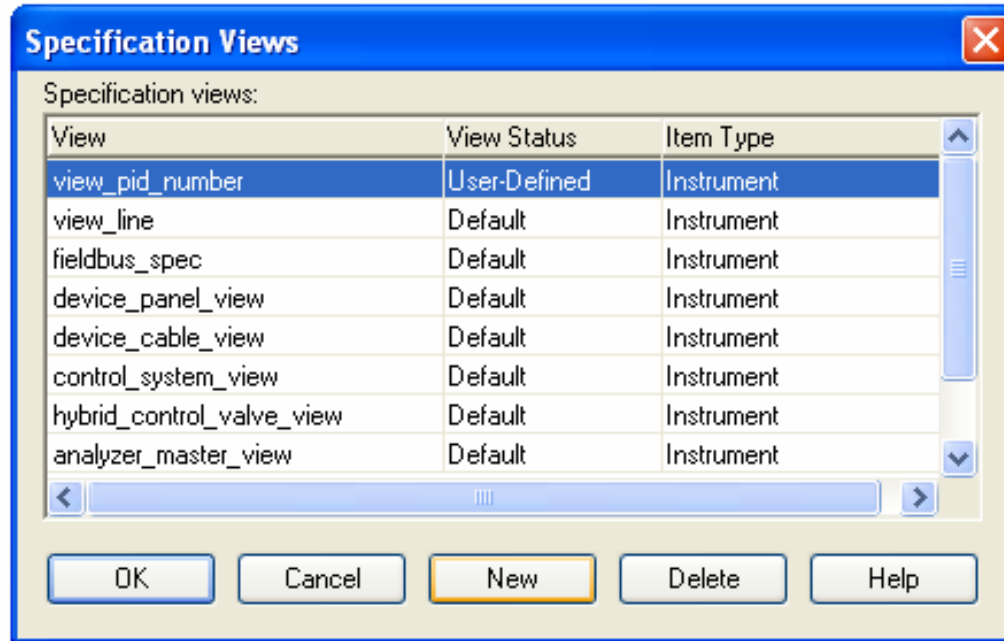
Creating and Utilizing User-Defined Views for SmartPlant Instrumentation Specification Forms

6. Log in to a SPI session and open the Spec Module.
7. Under “Actions” select “Specification Views”.





Creating and Utilizing User-Defined Views for SmartPlant Instrumentation Specification Forms



8. Select “New” and add your database view to the list.





Creating and Utilizing User-Defined Views for SmartPlant Instrumentation Specification Forms

You User-Defined View is now available for use in instrument specification forms.

Enjoy.

