



Shaw[®] a world of **Solutions**[™]

The Shaw Group Inc.[®]

Welcome

1. Shaw Group / Energy & Chemicals Division / Current Market

Harvey Vigneault – EVP Worldwide Operations

2. Design Engineering Dept

Stan Macie – Director of Design Engineering

3. IT / CAE Dept

Randy Huck – Manager CAE

4. Design Engineering Dept

Vicky Hutson – SPI / INtools CAE Analyst

Shaw Corporate Profile

The Shaw Group provides premier engineering, design, construction, maintenance, fabrication, and manufacturing services to private-sector and government clients in the energy, chemicals, power, nuclear, environmental, infrastructure, and emergency response markets.

Name:	The Shaw Group Inc.
Headquarters:	Baton Rouge, Louisiana
Public corporation:	NYSE Symbol: SGR
2008 Revenue:	\$7.0 Billion
Backlog:	\$19 Billion*
Number of employees:	26,000
Website	www.shawgrp.com



* As of 2/28/09

Shaw – A Market Leader

ENR 2009
The Top
500
Design
6th Overall

Rank	Category
1	Power
1	Fossil*
1	Nuclear Plants*
4	Petroleum*
4	Refineries & Petrochemical Plants*
5	Clean Air Compliance*
5	Chemical & Soil Remediation*
7	Site Assessment/ Compliance*
10	Industrial Process/Petro
10	Hazardous Waste
11	International Markets
13	Chemical Plants*

April 2009 Issue *June 2008 Sourcebook Issue

ENR 2008
The Top
400
Contractors
23rd Overall

Rank	Category
3	Hazardous Waste
4	Power
7	Fossil Fuel*
2	Nuclear*
4	O&M*
6	Transmission & Distribution*
9	Industrial Process*
3	Chemical Plants*
10	Contractors by New Contracts
11	Domestic Heavy Contracts
16	Industrial Process/Petro.
19	Contractors Working Abroad

May 2008 Issue *Sept 2008 Sourcebook Issue

ENR 2008
The Top
200
Environmental Firms
13th Overall

Rank	Category
2	Hazardous Waste
5	Construction/ Remediation
8	Type of Client: Federal
9	Consulting/Studies
9	Nuclear Waste
24	Contracts Awarded in 07

July 2008 Issue

The Shaw Group Inc.®
A Fortune 500
Company
357 Overall

Business Segments



Fossil & Nuclear



Maintenance



Energy &
Chemicals



Fabrication &
Manufacturing



Environmental &
Infrastructure

The Shaw Group Inc. is a full service provider of engineering, design, technology, procurement, construction, maintenance, fabrication, manufacturing, consulting and facilities management services for private sector and government clients in the energy, chemicals, environmental, infrastructure and emergency response markets.

Shaw Energy & Chemicals Business Sectors & Technology



Olefins

USC (Ultra-Selective Conversion)
ARS/HRS (Advanced/Heat Recovery System)
15 MMTA, 25 plants since 1992
40% of incremental capacity since 1992
Grassroots & Revamps



Refining

FCC, RFCC (SSW/Axens/TOTAL)
DCC & CPP (Sinopec/RIPP)
HGO & DAO
Hydroprocessing (Chevron/Axens)
Distillate Hydrotreating
Light Ends Processing
High Lift Vacuum Distillation



Petrochemicals/ Polymers

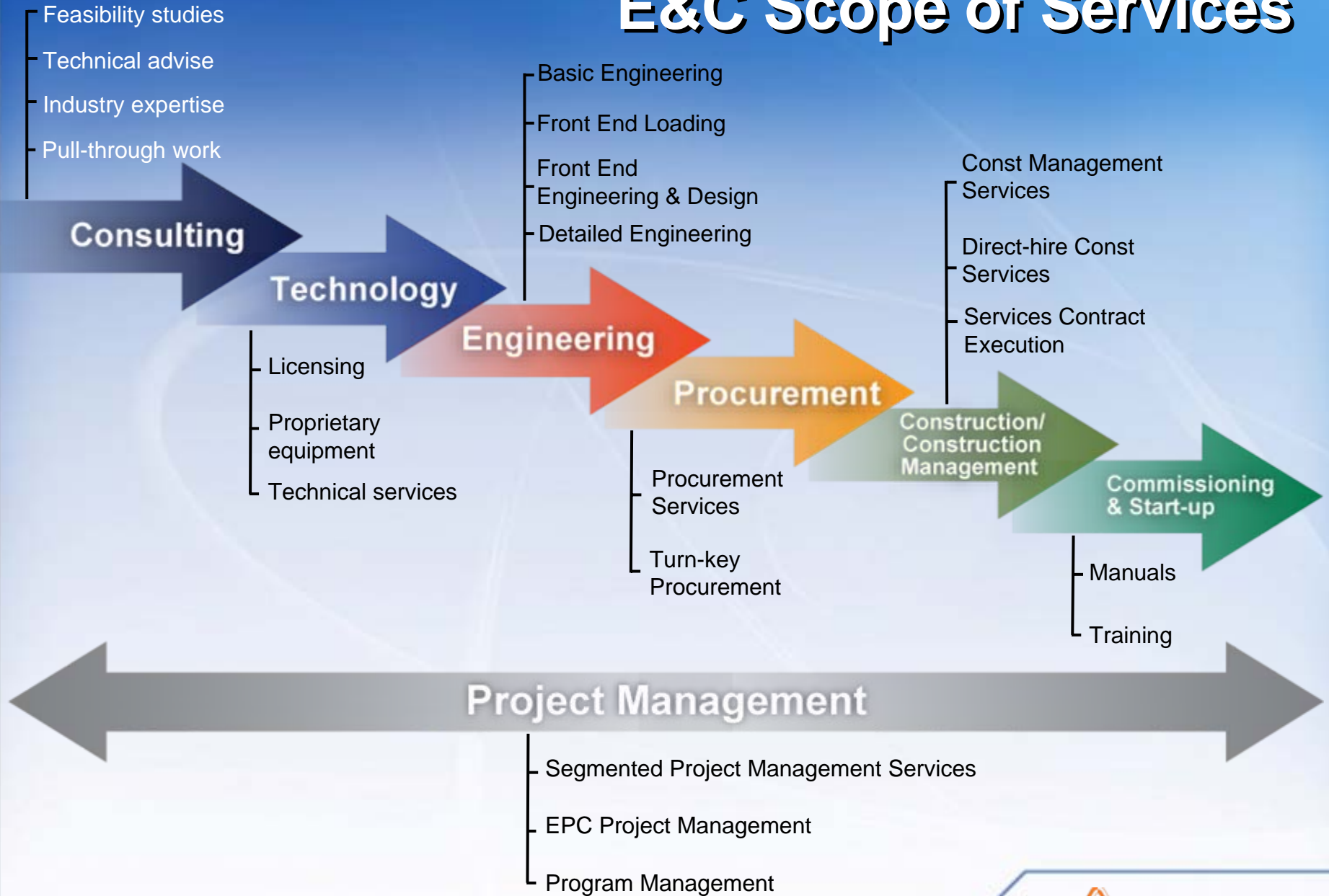
Ethylbenzene (ExxonMobil/Badger)
Styrene (TOTAL/Badger)
Cumene (ExxonMobil/Badger)
Bisphenol A (Shell/Badger)
Polyethylene (Nova)
Polystyrene (GE/SABIC)



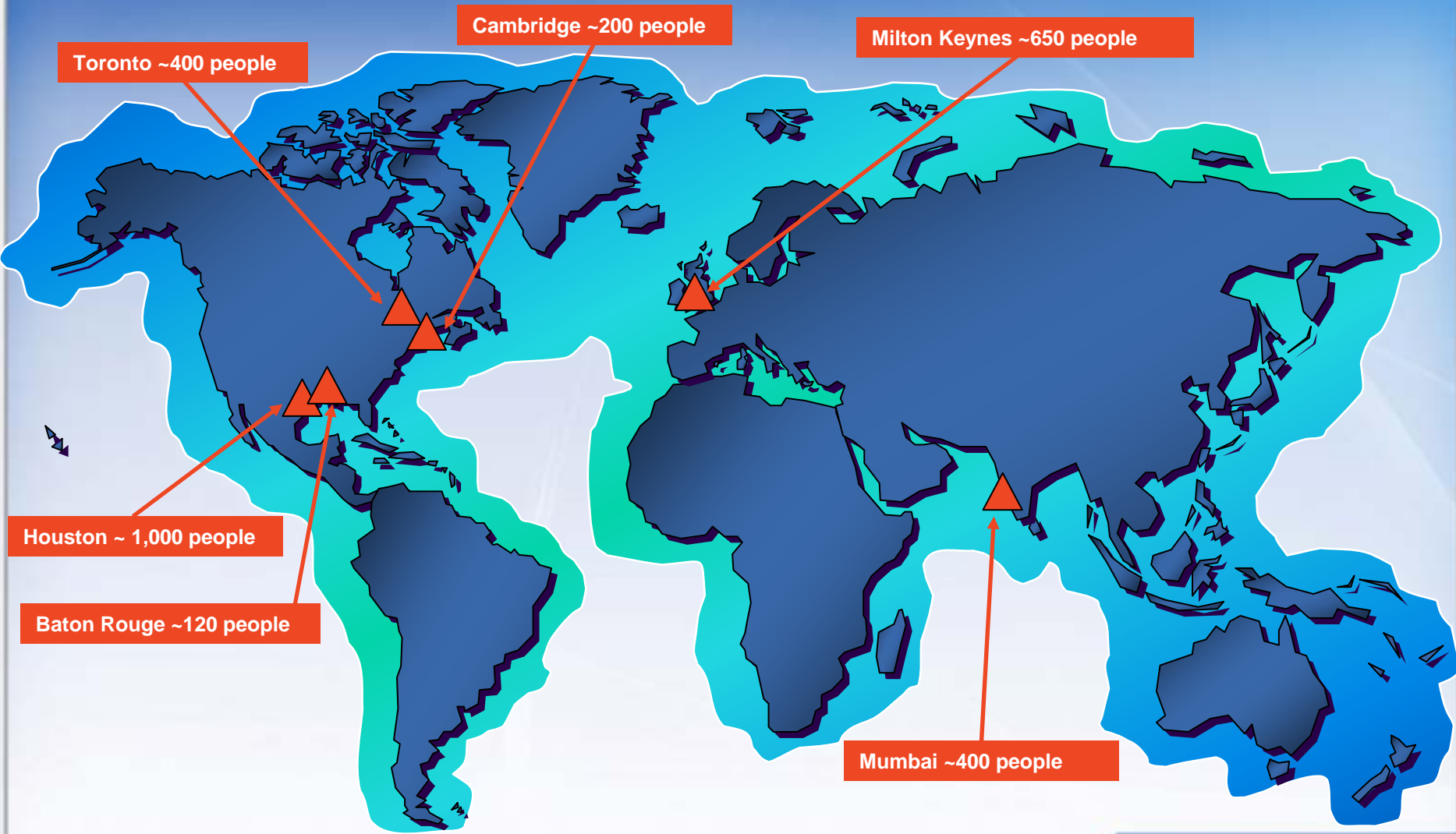
Upstream / Oil & Gas

Gas/Oil/Water Separation
Reinjection Systems
LNG Liquefaction & Regas
Natural Gas Treatment
NGL/LPG recovery
GTL/CTL (Sasol/Badger)
Compression & Transmission

E&C Scope of Services

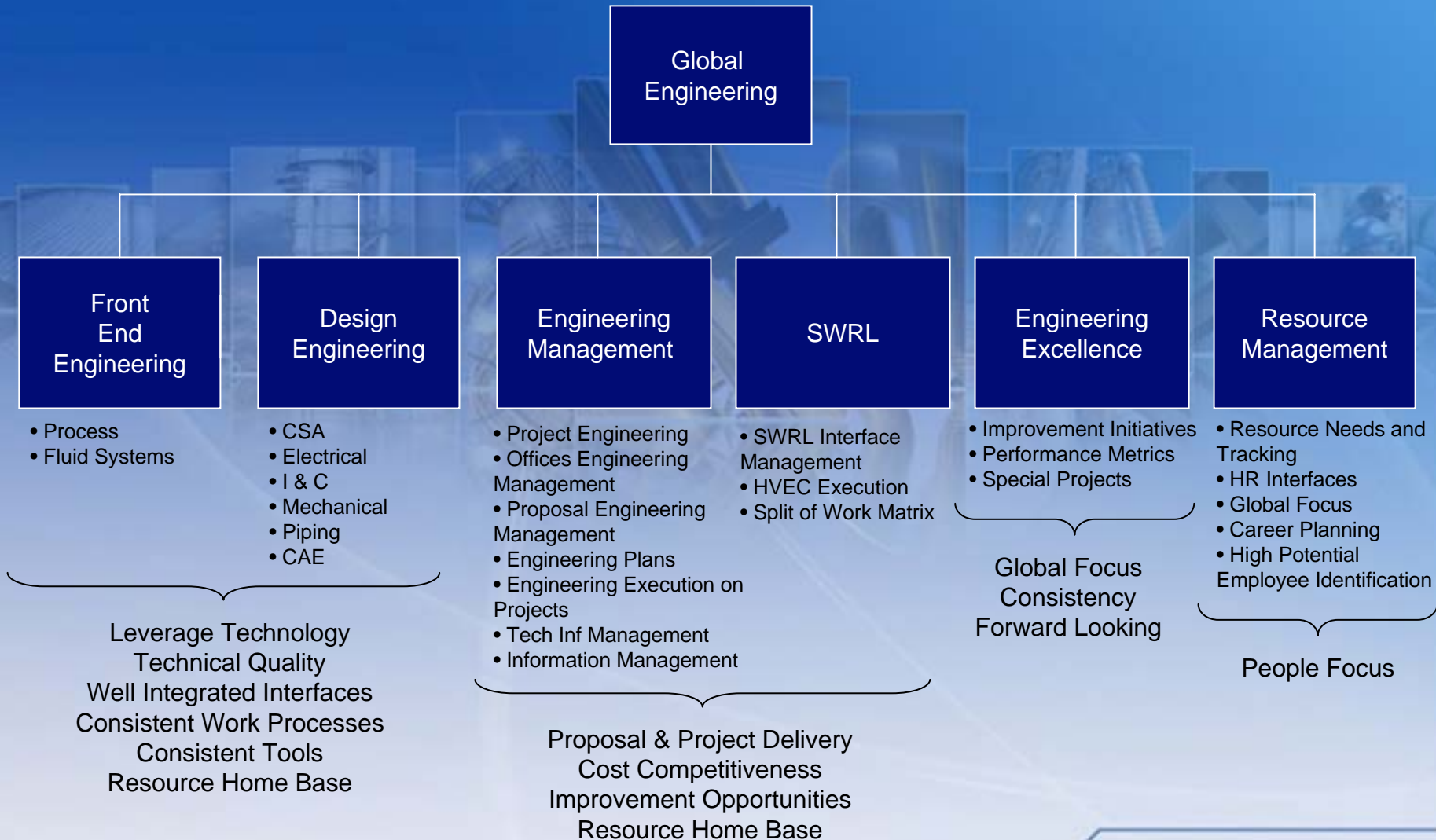


Shaw E&C Worldwide Locations



85M102006D

Shaw Energy and Chemicals – Global Engineering Organization



85M102006D

E&C Workshares

- Business model since mid 90's
 - High Value Centers
 - Shared Resources
- Current E&C Workshares
 - Every major project
 - Many Proposals

3D Workshares

- PDS & SP3D
- Numerous Projects (EP, EPC, EPCM)
- All E&C offices
- Environment
 - Segregated
 - Hosted/Remote Connect (Citrix)
 - Replicated

2D Workshares

- SPPID, SPI, SPEL
- Numerous Projects (EP, EPC, EPCM)
- Environment
 - Replicated Workshares
 - Hosted/Remote Connect (Citrix)

Smart Plant Instrumentation

- 9 yr history (starting with v4 INtools)
- Use on all applicable projects
- Use in all business Units
 - E&C
 - Fossil Power
 - Nuclear

Current Utilization

- 32 Current Projects
 - Full function
 - Wiring Only
 - Spec Sheets only
 - Process data only
- 150+ users
 - Major office include Denver, Houston, Charlotte, Cambridge, Stoughton, Toronto, Mumbai

Smart Plant Suite

- Extensive testing of Smart Plant Foundation and interaction with the other Smart Plant programs
- Out of the box testing of bi-directional data transfer between SPI, SPPID and SPEL through SPF
- Starting to use all of the Smart Plant programs on various projects

Future Plans

- Centralizing all projects out of Houston with Citrix connections
 - Better work share
 - Easier support for limited staff
- Utilizing on all projects where applicable regardless if deliverable
- Further standardization of business unit work flows