

DDPs Viewing

Majed Abouhatab

The Need

The screenshot shows a web browser window titled "PPM Siebel eCustomer - Windows Internet Explorer". The address bar contains the URL "http://crmweb.intergraph.com/ecustomer_enu/start.swe?SWI". The page header features the "INTERGRAPH" logo and navigation links for "My Account", "Help", "Contact Us", "Log In", and "Log Out". Below the header is a search bar with a "Go" button and a "Reports" dropdown menu. The main content area displays a knowledge base article titled "(DDP) - How do you set up DDP forms... Where are the pictures?". The article includes a "Menu" dropdown, a "Name" field, a "PROB:" field, a "Solution:" section with "ISSUE:" and "SOLUTION:" text, and "Product(s): INTOOLS" information. At the bottom, there is a "Resolution Documents" section with a table header and a "No Records" message.

PPM Siebel eCustomer - Windows Internet Explorer

http://crmweb.intergraph.com/ecustomer_enu/start.swe?SWI

Live Search

PPM Siebel eCustomer

Home Service

INTERGRAPH

My Account | Help | Contact Us | Log In | Log Out

Search: [] Go Advanced Search Reports

Solutions:

(DDP) - How do you set up DDP forms... Where are the pictures? | 1 of 1+

Menu

Name: (DDP) - How do you set up DDP forms... Where are the pictures?

PROB: (DDP) - How do you set up DDP forms... Where are the pictures?

Solution:

ISSUE: User trying to do initial setup of DDP, but can not find example forms or graphics.

SOLUTION: Data sheets themselves not delivered, but an example DDP datasheet .psr file can be found in the INtools\PSR directory. Pictures for use on the standard 'outline' psr are actually stored with their respective groups in the database. Go to the DDP groups screen and any group with a picture can be viewed and the picture saved from the database for use.

Product(s): INTOOLS
Version(s): 06.00.02.12
Source: 1-27352433
Date: 5/10/04

Resolution Documents

Menu

No Records

File Name	File Type	Size (Bytes)	Last Updated	Description
-----------	-----------	--------------	--------------	-------------

Internet 100%

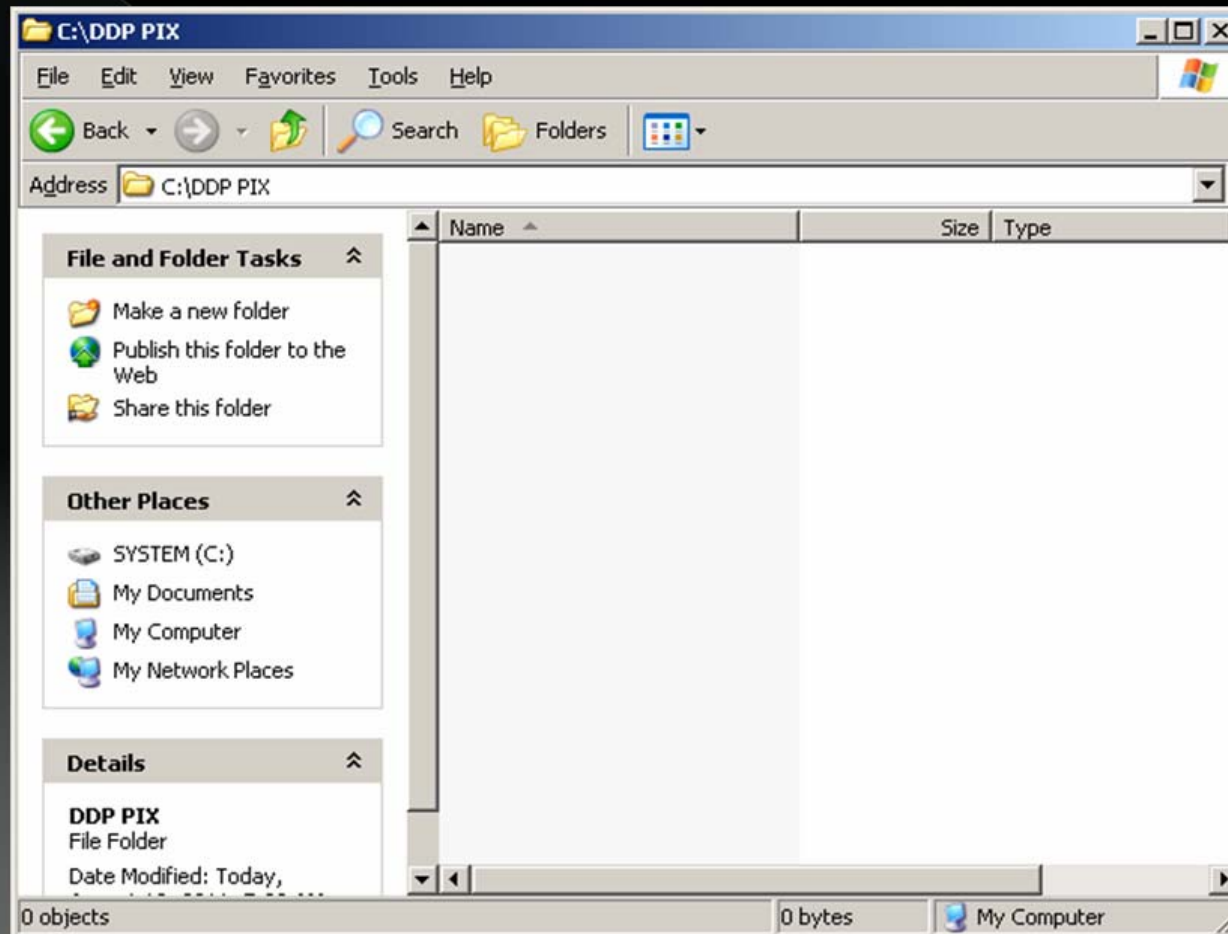
The Challenge

	CHG_NUM	CHG_STATUS	DIM_GRP_PIC	DIM_GRP_PIC_...	DIM_GRP_PIC_.
	0	W	<Binary data>	Y	wmf
	0	W	<Binary data>	Y	wmf
	0	W	<Binary data>	Y	wmf
	0	W	<Binary data>	Y	wmf
	0	W	<Binary data>	Y	wmf

A Solution

- Create a folder
- Create VBS file
- Run the VBS file

Create a folder



Create VBS file

- Create ActiveX Data Objects
 - > ADO Stream Object
 - > ADO Connection Object
- Open a connection string
- Make the result of the query a record set
- Cycle through the records and save to files

Create ADO Stream Object

```
Set BinaryStream =  
CreateObject("ADODB.Stream")
```

Create ADO Connection Object

```
Set cn = CreateObject("ADODB.Connection")
```


Open a connection string

```
cn.Open "Driver={SQL  
Server};Server=<ServerName>;Database=<  
DatabaseName>;Trusted_Connection=yes;"
```

Hint:

- For non windows authentication, use
Uid=<USERID>;Pwd=<PASSWORD>;

Make the result of the query a record set

```
Set rs = cn.Execute("SELECT DIM_GRP_NAME,  
DIM_GRP_PIC_TYPE, DIM_GRP_PIC FROM  
<Schema>.DIMENSIONAL_GROUP WHERE  
DIM_GRP_PIC_TYPE <> ''")
```

Hint:

- Use the following condition to return DDPs for SP3D only
DIM_GRP_CAD_CODE = 'SP3D'

Make the result of the query a record set

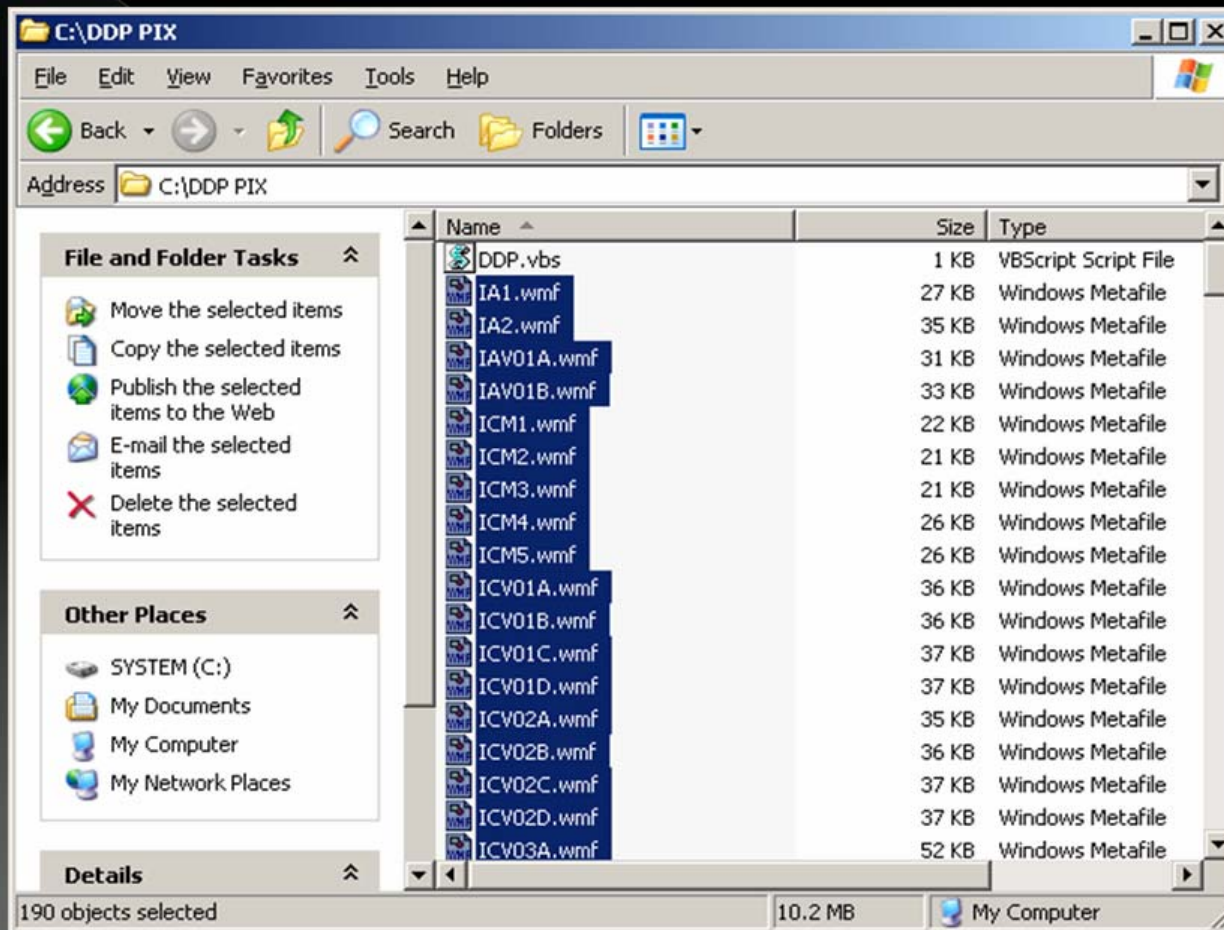
For Oracle

```
select  
  <Schema>."DIMENSIONAL_GROUP"."DIM_G  
  RP_NAME",  
  <Schema>."DIMENSIONAL_GROUP"."DIM_G  
  RP_PIC",  
  <Schema>."DIMENSIONAL_GROUP"."DIM_G  
  RP_PIC_TYPE" from  
  <Schema>."DIMENSIONAL_GROUP"
```

Cycle through the records and save to files

```
rs.MoveFirst
Do Until rs.EOF
BinaryStream.Open
BinaryStream.Type = 1
BinaryStream.Write rs("DIM_GRP_PIC")
BinaryStream.SaveToFile rs("DIM_GRP_NAME")
    & "." & rs("DIM_GRP_PIC_TYPE"), 2
BinaryStream.Close
rs.MoveNext
Loop
```


Run the VBS file



Contact

• abouhatab@yahoo.com