

SmartPlant Instrumentation 2016 SP1 Product Update

Dan Williams, Intergraph

Guy Masin, Intergraph

David Kaiser, Intergraph

February, 2017

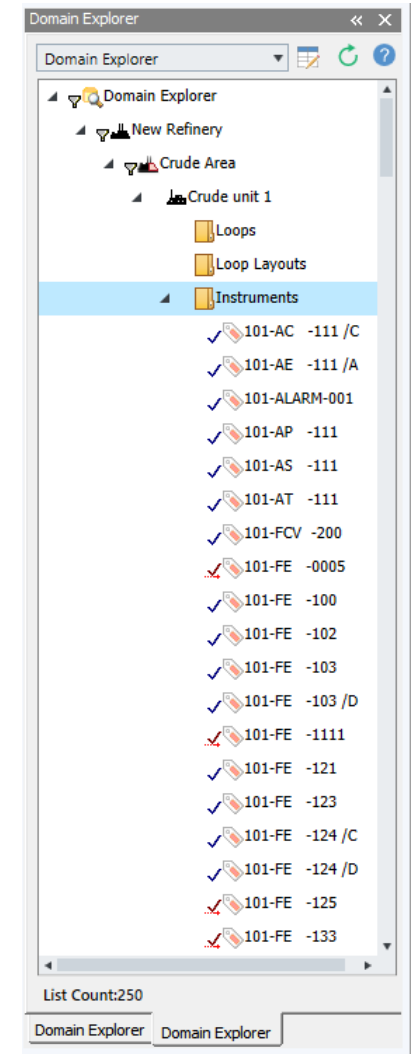
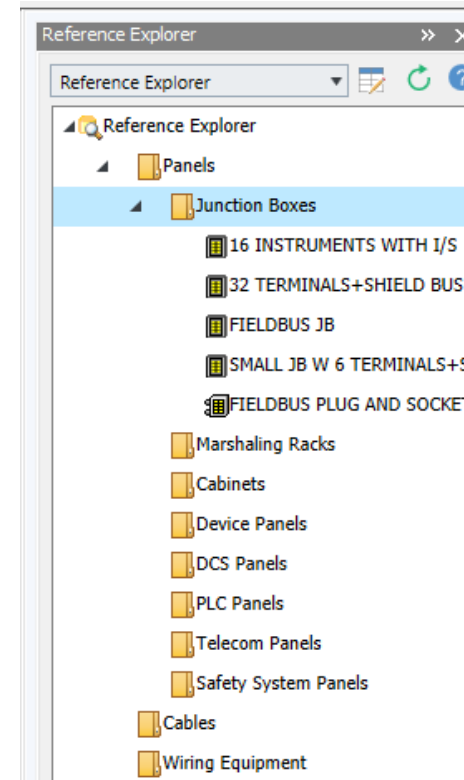
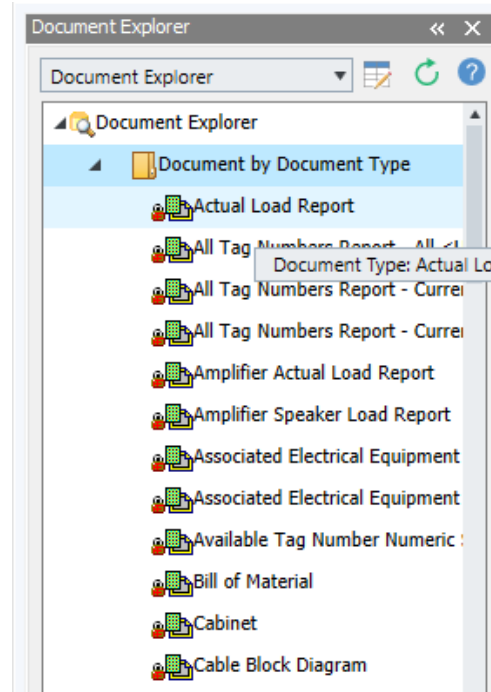
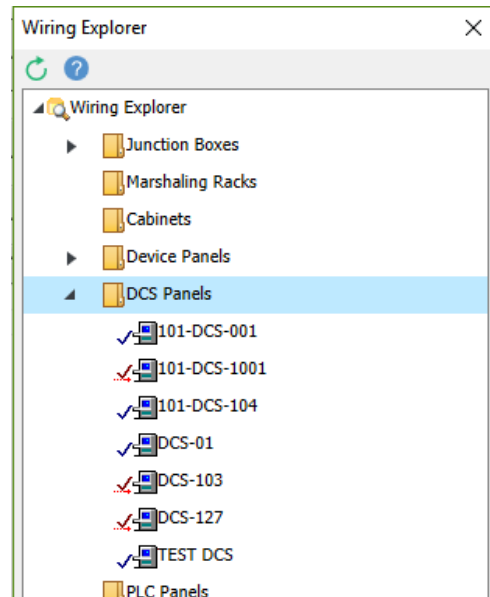


SPI 2016 SP1 – Coming May 2017 - What is it all about?

- Improving the EDE overall performance
- Revamping SPI's explorers- Better Windows 10 Support, Better UX :
 - Domain Explorer
 - Reference Explorer
 - Binder module explorer
 - Wiring explorer
- Improving productivity – Favorites
- Improving productivity – Show EDE
- Improving productivity – Quick search

Revamping SPI's explorers

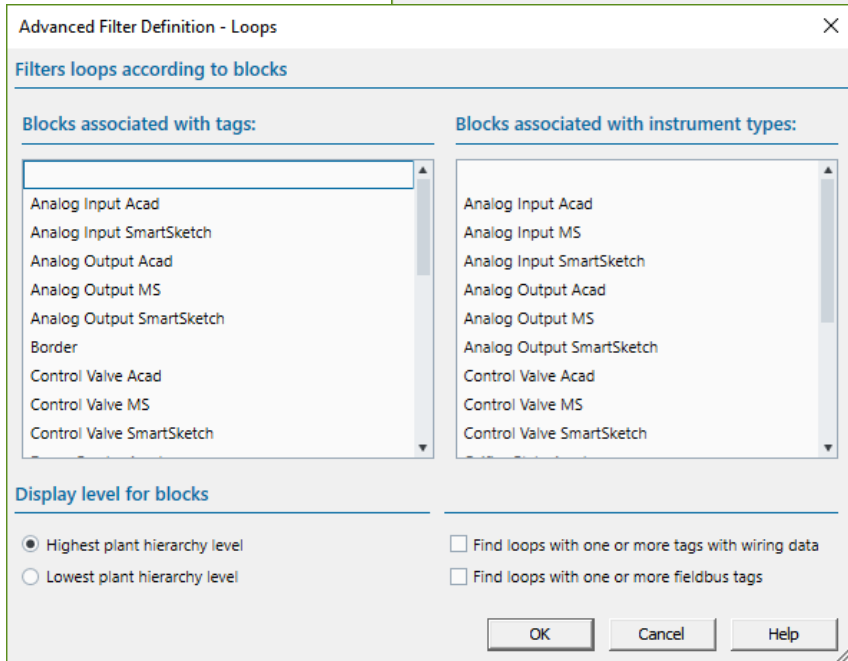
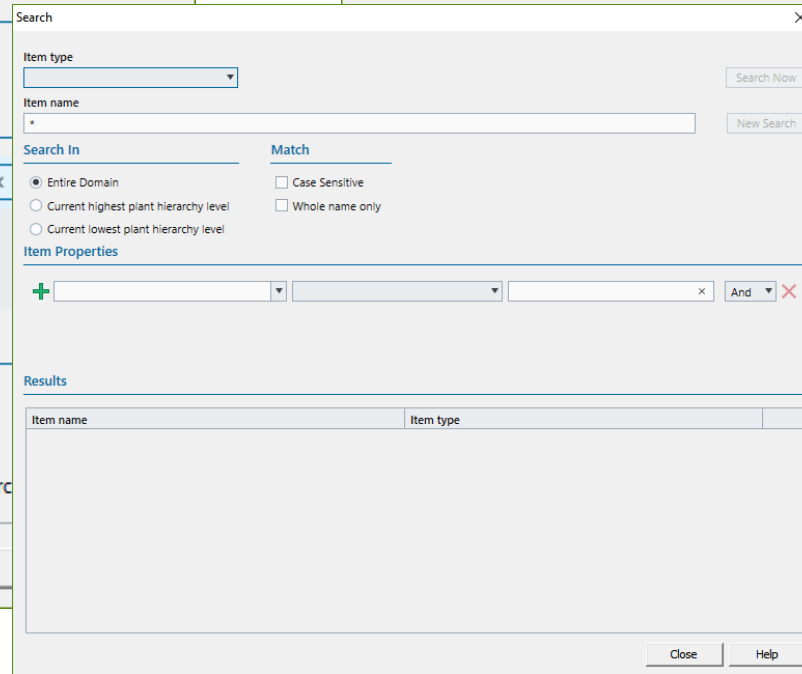
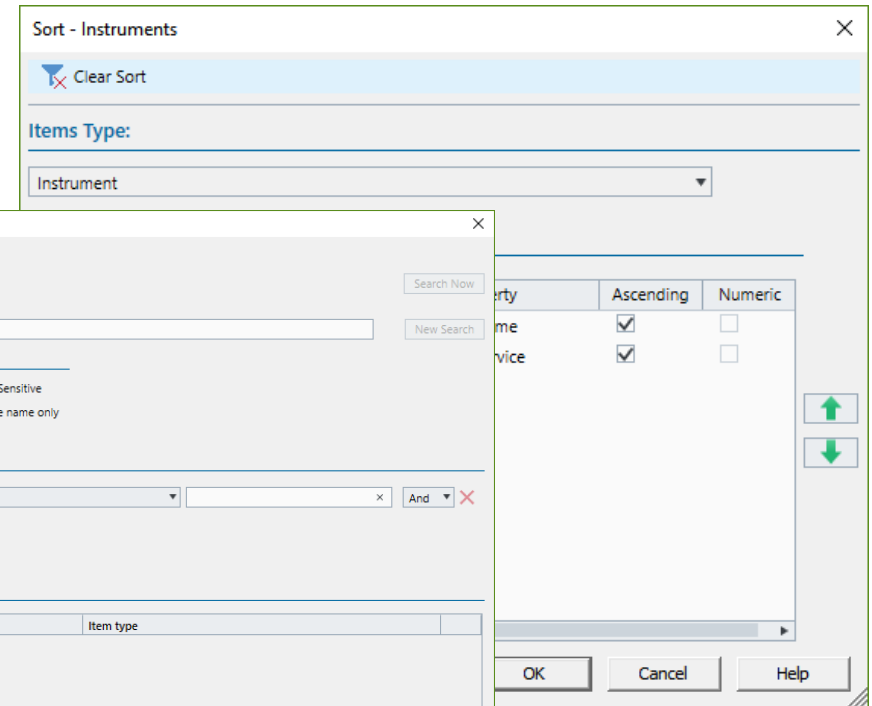
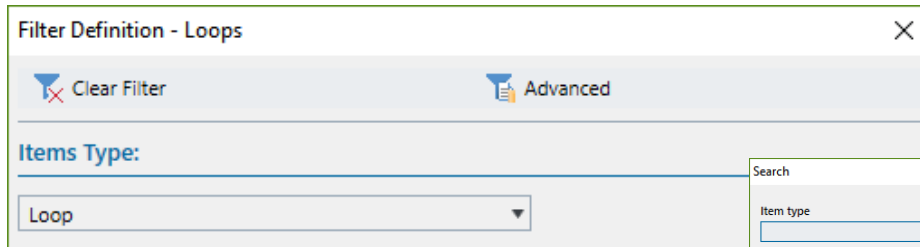
- Revamping SPI's explorers- Better Windows 10 Support, Better UX :
 - Domain Explorer
 - Reference Explorer
 - Binder module explorer
 - Wiring explorer



Revamping SPI's explorers

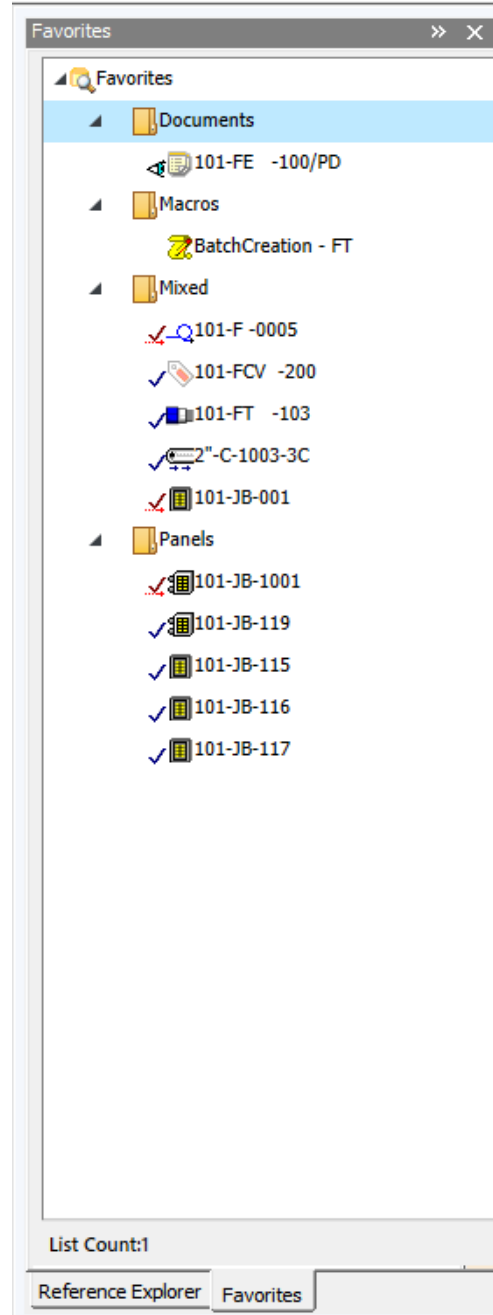
- Revamping SPI's explorers- Better Windows 10 Support, Better UX :

- Sort
- Search
- Filter



Improving productivity

- New Favorites tab (replacing my list)

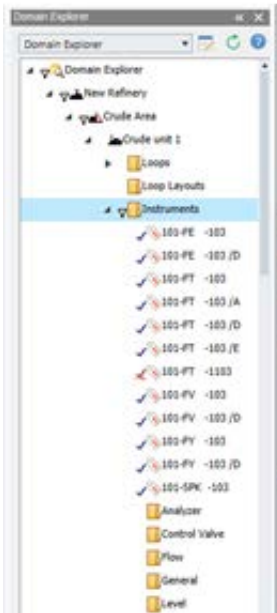


- Custom your tab – Folders and content
 - Documents
 - Macro Definitions
 - Panels
 - Mixed

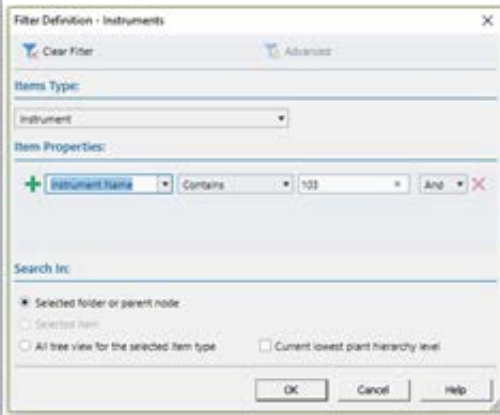
Improving productivity

Show EDE

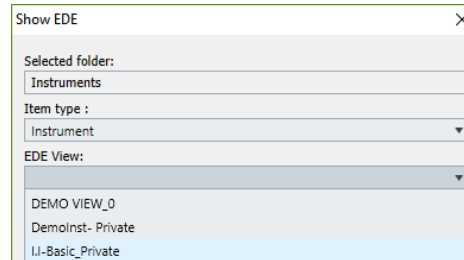
- Create an EDE in your Private folder
- Show EDE from Domain Explorer – to use Domain explorer filter.
- Edit your data



Filtered Folder in the Domain Explorer



Choose you EDE (Private Folder)



EDE is available for the Task at hand

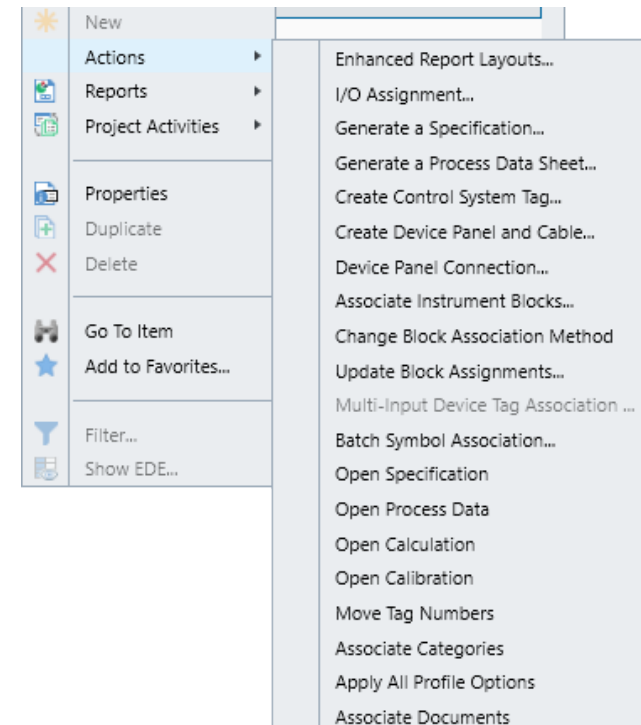
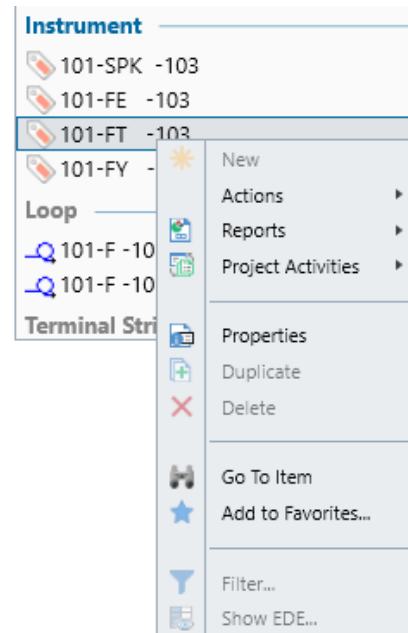
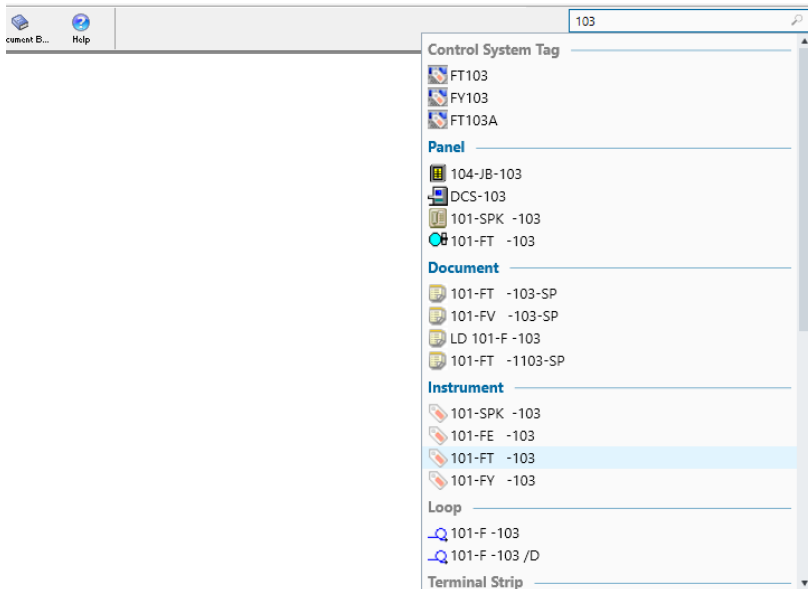
A screenshot of the EDE data table. The table has columns for Instrument Name, Instrument Service, Project Name, Instrument Type, and Instrument I/O Type. The data is filtered to show only instruments from the 'I.I-Basic_Private' folder.

Instrument Name	Instrument Service	Project Name	Instrument Type	Instrument I/O Type
101-SPK -103	Tag for Telecom lab	As-Built	SPK - SPEAKER (General)	
101-PV -103 /D	Text	As-Built	PV - Control Valve (Control Valve)	
101-PV -103	PLC closed loop	As-Built	PV - Control Valve (Control Valve)	
101-PE -103 /D	Text	As-Built	FE - D/P TYPE FLOW ELEMENT (Flow)	
101-PE -103	Feed from V-9	As-Built	FE - D/P TYPE FLOW ELEMENT (Flow)	
101-PY -103 /D	Text	As-Built	PY - I/P TRANSDUCER (General)	AI
101-PY -103	Text	As-Built	PY - I/P TRANSDUCER (General)	AI
101-FT -103 /E	Text	As-Built	FT - D/P TYPE FLOW TRANSMITTER (Flow)	AI
101-FT -103 /D	Text	As-Built	FT - D/P TYPE FLOW TRANSMITTER (Flow)	AI
101-FT -103 /A	Text	As-Built	FT - D/P TYPE FLOW TRANSMITTER (Flow)	AI
101-FT -103	Text	As-Built	FT - D/P TYPE FLOW TRANSMITTER (Flow)	AI
101-FT -1103	Created from Batch Macro Creation	As-Built	FT - D/P TYPE FLOW TRANSMITTER (Flow)	AO

Improving productivity

Quick Search

- Search as you type
- Search from everywhere
- Search for anything (Documents, Instruments, Queries,...)
- Have a complete Right Click Menu functionality (Open Document)
- Have a Domain Explorer Go-To -Item





Thank You

